

Rail & Accessories

According to different markets, different customer requirements, as well as the project budget, we design and produce various types of rails and accessories to meet the customer's projects need. Each product is subjected to rigorous strength calculation, SGS testing, TUV, CE, and AS/NZS1170.2 certifications.



Item No. LAN-R52
Description 52mm Rail



Item No. LAN-R52L
Description 52mm L Rail



Item No. LAN-R62
Description 62mm Rail



Item No. LAN-R62C
Description 62mm C Rail



Item No. LAN-SFR-01
Description Splice for Rail Kit 01



Item No. LAN-SFR-02
Description Splice for Rail Kit 02



Item No. LAN-R60
Description 60mm Rail



Item No. LAN-R70
Description 70mm Rail



Item No. LAN-TEC
Description Thin Film Double-glazed Module End Clamp Kit



Item No. LAN-TIC
Description Thin Film Double-glazed Module Inner Clamp Kit



Item No. LAN-R42
Description 42mm Rail



Item No. LAN-R41
Description 41mm Rail (T-Bolt)



Rail & Accessories

13
Item No. LAN-R41-2
Description 41mm Rail for Ballasted Mounting



14
Item No. LAN-R46
Description 46mm Rail



21
Item No. LAN-EIC
Description Universal Adjustable (30-40mm) Inner Clamp Kit (Include Spring & Earthing Clip)



22
Item No. LAN-FEC
Description General End Clamp Kit



15
Item No. LAN-R29
Description 29mm Rail



16
Item No. LAN-R26
Description 26mm Rail



23
Item No. LAN-RCN
Description Standard Rail Clamp with ERK Nuts Kita



24
Item No. LAN-RCB
Description Standard Rail Clamp with T-Bolt Kit



17
Item No. LAN-R65
Description 65mm Rail



18
Item No. LAN-REC
Description ERK-R52 Rail & ERK-R52L Rail End Cover Cap



25
Item No. LAN-FEC-3035
Description 30 & 35mm Exchange End Clamp Kit



26
Item No. LAN-RCC
Description Standard Rail Clamp with the Carriage Bolt



19
Item No. LAN-AEC
Description Universal Adjustable (30-35mm) End Clamp Kit



20
Item No. LAN-AIC
Description Universal Adjustable (30-40mm) Inner Clamp Kit



27
Item No. LAN-ELG-01
Description Earthing Lug Kit



28
Item No. LAN-ELG-02
Description Earthing Lug Kit 02



Rail & Accessories

29
Item No. LAN-ELG-03
Description Earthing Lug Kit 03



30
Item No. LAN-NUT
Description ERK Nuts



Item No. LAN-CCP-03
Description Cable Clip for PV Panels for Holding 3 Cables



37
Item No. LAN-CCP-04
Description Cable Clip for PV Panels for Holding 2 Cables



31
Item No. LAN-NBW
Description ERK Nuts Assembly with Bolt and Washer Kit



32
Item No. LAN-TBK
Description T-Bolt Kit



Item No. LAN-CCP-05
Description Cable Clip for PV Panels for Holding 4 Cables



39
Item No. LAN-CCP-06
Description Cable Clip for PV Panels for Holding 3 Cables



33
Item No. LAN-REL-A
Description Standard Rail Earthing Plate Type A



34
Item No. LAN-REL-B
Description Standard Rail Earthing Plate Type B



Item No. LAN-CCP-07
Description 90° Cable Clip for PV Panels for Holding 2 Cables



41

35
Item No. LAN-CCP-01
Description Cable Clip for PV Panels for Holding 3 Cables



36
Item No. LAN-CCP-02
Description Cable Clip for PV Panels for Holding 2 Cables



Metal Roof Attachment

Lanergy Tin roof systems divided into two fixing methods

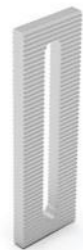
1. Drilling solutions, like bracket L-feet, hanger bolt, T type hook etc.
2. Standing seam clamp, direct mounting, no damage to the roof.

A design that includes major specifications saves you inventory cost, quick and easy to install. Innovative design of rail connect base-support can effectively increase the product strength, ensure the safety of the product use. We have a large variety of tin roof brackets for customers' choice Customization allowed according to customers' need to meet special installation requirements.

Technical features:

Product name	Metal roof mounting system
Application	Metal roof
Inclination	Parallel to the roof
Material	AL 6005-T5, SUS 304, EPDM
Finish	AL 6005-T5 Anodized, SUS 304 Shot blasting
Module orientation	Landscape or Portrait

1 Item No. LAN-TRB-D27
Description Height adjust plate for L feet



2 Item No. LAN-TRB-D22
Description L Feet for Trapezoidal Sheet Metal



3 Item No. LAN-TRB-D05
Description Hanger Bolt for Corrugated Fibre Cement, Corrugated or Trapezoidal Sheet Metal (M10×180, M10×200, M10×250, M10×300)



4 Item No. LAN-TRB-D09
Description Asphalt Shingles Interface



5 Item No. LAN-TRB-D01
Description L Feet for Corrugated or Trapezoidal Sheet Metal



6 Item No. LAN-TRB-D25
Description Offset Hole L Feet for Corrugated or Trapezoidal Sheet Metal



7 Item No. LAN-TRB-D03
Description Hanger Bolt L Feet for Corrugated Fibre Cement, Corrugated or Trapezoidal Sheet Metal (M10×180, M10×200, M10×250, M10×300)



8 Item No. LAN-TRB-D26
Description Hanger Bolt Offset Hole L Feet for Corrugated Fibre Cement, Corrugated or Trapezoidal Sheet Metal (M10×180, M10×200, M10×250, M10×300)



9 Item No. LAN-TRB-D08
Description 8# Tin Roof Hook for Trapezoidal Sheet Metal



10 Item No. LAN-TRB-D07
Description 7# Tin Roof Hook for Trapezoidal Sheet Metal



11 Item No. LAN-TRB-D06
Description 6# Tin Roof Hook for Trapezoidal Sheet Metal



12 Item No. LAN-TRB-D21
Description 21# Tin Roof Hook for Trapezoidal Sheet Metal



Metal Roof Attachment

13
Item No. LAN-TRB-D28
Description 70mm Mini Rail for Corrugated or Trapezoidal Sheet Metal



14
Item No. LAN-TRB-D20
Description 65mm Mini Rail for Corrugated or Trapezoidal Sheet Metal



Item No. LAN-TRB-C02
Description Klip Lok 406 & 700 Interface



20

15
Item No. LAN-TRB-D13
Description 60mm Mini Rail for Corrugated or Trapezoidal Sheet Metal



16
Item No. LAN-TRB-D10
Description 26mm Mini Rail for Corrugated or Trapezoidal Sheet Metal



Item No. LAN-TRB-C04
Description Standing Seam Clamp



21

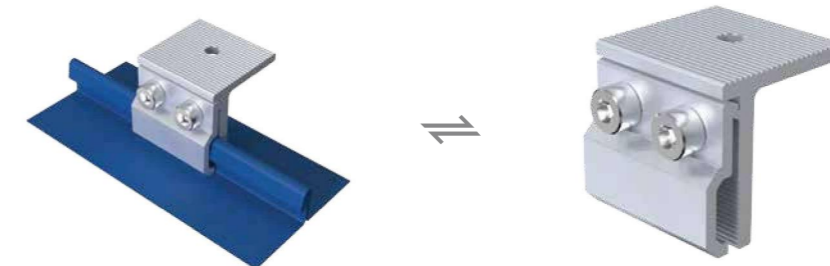
17
Item No. LAN-TRB-D11
Description 29mm U Type Rail for Corrugated or Trapezoidal Sheet Metal



18
Item No. LAN-TRB-D14
Description 46mm Mini Rail for Corrugated or Trapezoidal Sheet Metal

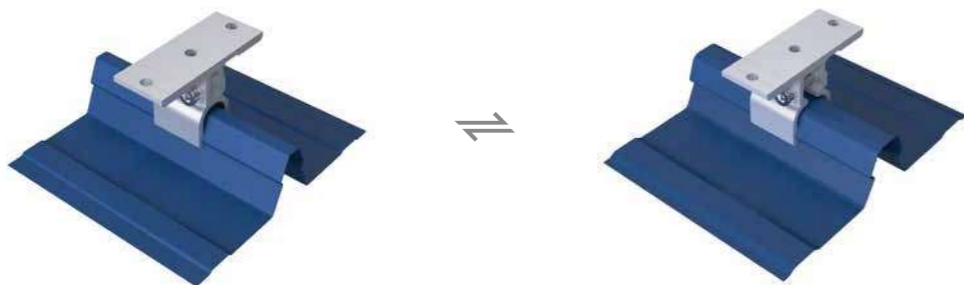


Item No. LAN-TRB-C05
Description Standing Seam Clamp

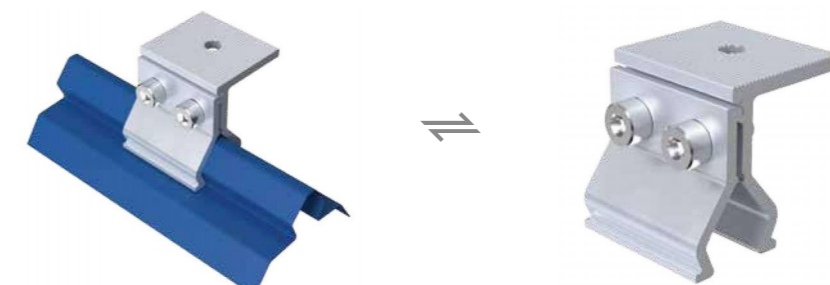


22

19
Item No. LAN-TRB-C01
Description Klip Lok 406 & 700 Interface



Item No. LAN-TRB-C06
Description Standing Seam Clamp



23

Metal Roof Attachment

24
Item No. LAN-TRB-C14
Description Metdek 855 Dimondek 630 Interface



Item No. LAN-TRB-C21
Description Standing Seam Clamp



28

25
Item No. LAN-TRB-C15
Description Metdek 500 Interface



Item No. LAN-TRB-C22
Description Standing Seam Clamp



29

26
Item No. LAN-TRB-C16
Description RiverClack Roofing Profile



Item No. LAN-TRB-C23
Description Klip Lok 700 Interface



30

27
Item No. LAN-TRB-C20
Description Lysaght Klip-lok 406 Interface



Item No. LAN-TRB-C24
Description Standing Seam Clamp



31

Metal Roof Attachment

32
Item No. LAN-TRB-C25
Description Klip Lok 700 Interface



Item No. LAN-TRB-C38
Description Lysaght Klip-lok 700 Interface



33
Item No. LAN-TRB-C26
Description WeatherClip II 700 Interface



Item No. LAN-TRB-C13
Description Lysaght Klip-lok Interface



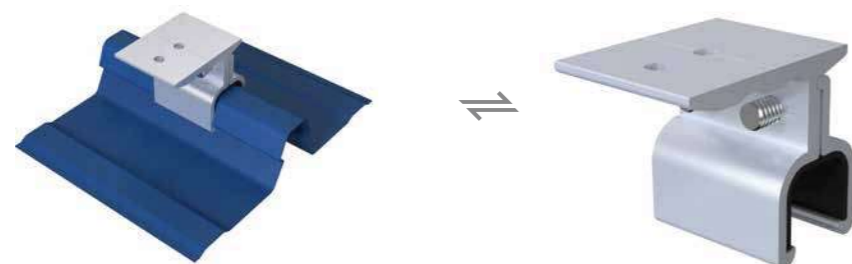
34
Item No. LAN-TRB-C39
Description Lysaght Klip-lok 700 Interface



Item No. LAN-TRB-C29
Description Lysaght Klip-lok 406 Interface



35
Item No. LAN-TRB-C27
Description Klip Lok 700 Interface



Item No. LAN-TRB-C30
Description WeatherClip II 700 Interface



Metal Roof Attachment

40
Item No. LAN-TRB-C31
Description Clip Lock Interface



Item No. LAN-TRB-C35
Description Standing Seam Clamp



44

41
Item No. LAN-TRB-C32
Description Valio Metal Sheet Roof Interface



Item No. LAN-TRB-C36
Description Standing Seam Clamp

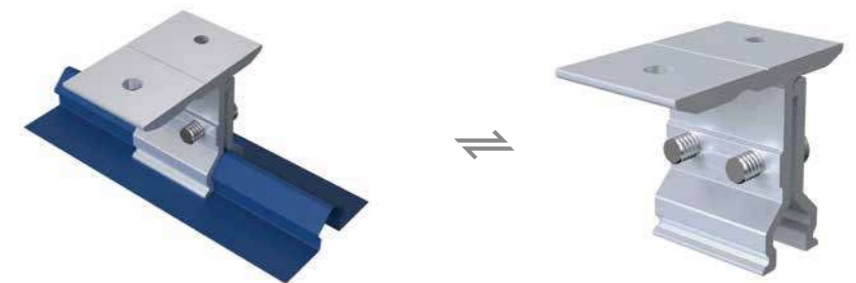


45

42
Item No. LAN-TRB-C33
Description Standing Seam Clamp

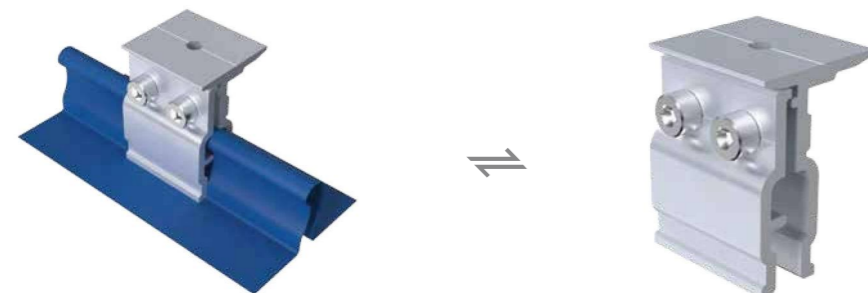


Item No. LAN-TRB-C28
Description Valio Metal Sheet Roof Interface



46

43
Item No. LAN-TRB-C34
Description Standing Seam Clamp



Item No. LAN-TRB-C10
Description Stainless Steel Tin Interface Bracket



47

Tile Roof Attachment

Lanergy provides comprehensive roof hook installation solutions for all types of roofs. Whether it's tile, flat tile, slate tile, or asphalt shingle roofing, our roof hooks are designed to perfectly suit. With thoughtful design, our unified roof hook specifications effectively lower inventory costs and allow for quick and easy installation. The innovative rail-connected base increases product strength and ensures safety during use. We offer a wide selection of roof hook models for customers to choose from based on their needs. Customization is also available to meet unique installation requirements. Years of installation experience make us experts in roof hooks, providing quality roofing solutions for our customers.

Technical features:

Product name	Tile roof mounting system
Application	Tile roof, Flat tile roof, Slate roof
Inclination	Parallel to the roof
Material	AL 6005-T5, SUS 304, EPDM
Finish	AL 6005-T5 Anodized, SUS 304 Shot blasting
Module orientation	Landscape or Portrait

1 Item No. LAN-TRH-T17
Description Tile Roof Hook



2 Item No. LAN-TRH-T18
Description Tile Roof Hook



3 Item No. LAN-TRH-T20(t=6mm)
Description Tile Roof Hook



4 Item No. LAN-TRH-T22
Description Tile Roof Hook



5 Item No. LAN-TRH-T02
Description Tile Roof Hook



5

6 Item No. LAN-TRH-T01
Description Tile Roof Hook



6

7 Item No. LAN-TRH-T04
Description Tile Roof Hook for Holding 3 Cables



7

8 Item No. LAN-TRH-T03
Description Tile Roof Hook



8

9 Item No. LAN-TRH-T06
Description Tile Roof Hook



9

10 Item No. LAN-TRH-T05
Description Tile Roof Hook



10

11 Item No. LAN-TRH-T08
Description Tile Roof Hook



11

12 Item No. LAN-TRH-T07
Description Tile Roof Hook



12

Tile Roof Attachment

13
Item No. | LAN-TRH-T09
Description | Tile Roof Hook



14
Item No. | LAN-TRH-T10
Description | Tile Roof Hook



Item No. | LAN-TRH-F01
Description | Flat Tile Roof Hook



21
Item No. | LAN-TRH-F02
Description | Flat Tile Roof Hook



15
Item No. | LAN-TRH-T11
Description | Tile Roof Hook



16
Item No. | LAN-TRH-T12
Description | Tile Roof Hook



Item No. | LAN-TRH-F03
Description | Flat Tile Roof Hook



23
Item No. | LAN-TRH-F04
Description | Flat Tile Roof Hook



17
Item No. | LAN-TRH-T13
Description | Tile Roof Hook



18
Item No. | LAN-TRH-T14
Description | Tile Roof Hook



Item No. | LAN-TRH-S01
Description | Slate Roof Hook



25
Item No. | LAN-TRH-S02
Description | Slate Roof Hook



19
Item No. | LAN-TRH-T15
Description | Tile Roof Hook



20
Item No. | LAN-TRH-T16
Description | Tile Roof Hook



Item No. | LAN-TRH-S03
Description | Slate Roof Hook



27
Item No. | LAN-TRH-S04
Description | Slate Roof Hook

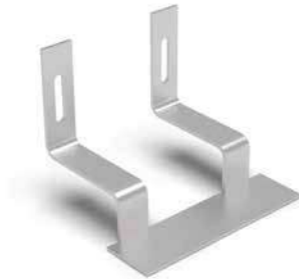


Tile Roof Attachment

29
Item No. LAN-TRH-T24
Description Tile Roof Hook



30
Item No. LAN-TRH-T21
Description Tile Roof Hook



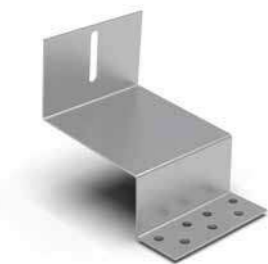
31
Item No. LAN-TRH-T19
Description Tile Roof Hook



32
Item No. LAN-TRH-T26
Description Tile Roof Hook



33
Item No. LAN-TRH-T25
Description Tile Roof Hook



Tilt Mounting



Adjustable tilt system is used for metal roof concrete roof. Fixed or adjustable angles as 10-15 deg, 15-30 deg and 30-60 degree are for your option to maximize energy production. All Products pre-assembled before shipment, to make the installation easy and quick. Unique design of inner and outer tube with adjustable joints, makes structure stronger, different from the same type products on the market today, and widely compatible with standing seam clamp.

Technical features:

Product name	Adjustable tilt mounting system
Application	Flat concrete roof, metal roof
Inclination	10-15°, 15-30°, 30-60° or customized
Material	AL 6005-T5, SUS 304, EPDM
Finish	AL 6005-T5 Anodized
Module orientation	Landscape or Portrait

1 Assembly

Item No. | LAN-AFL
Description | Adjustable Front Leg



Item No. | LAN-FEC
Description | General End Clamp Kit



Item No. | LAN-EIC
Description | Universal Adjustable (30-40mm) Inner Clamp Kit (Include Spring & Earthing Clip)



Item No. | LAN-ARL-1015
LAN-ARL-1530
LAN-ARL-3060
Description | 10-15° Adjustable Rear Leg
15-30° Adjustable Rear Leg
30-60° Adjustable Rear Leg



Mini Rail with 5 degree support base, lift up the height of the solar panel to achieve cooling conditions, thus maximizing power generation. Simple design, easy to install, with good price.

Technical features:

Product name	Mini Rail Support mounting system
Application	Metal roof
Inclination	5°, 10°
Material	AL 6005-T5, SUS 304
Finish	AL 6005-T5 Anodized
Module orientation	Portrait

Item No. Description	LAN-MFS-5 Mini Rail 5° Support Front Leg	Item No. Description	LAN-MRS-5 Mini Rail 5° Support Rear Leg	Item No. Description	LAN-MFS-10 Mini Rail 10° Support Front Leg
------------------------	--	------------------------	---	------------------------	--



1 Assembly

Item No. | LAN-FEC-BS
Description | General End Clamp Kit



Item No. | LAN-AIC-BS
Description | Universal Adjustable (30-40mm) Inner Clamp Kit



Item No. | LAN-TRB-D10
Description | 26mm Mini Rail for Corrugated or Trapezoidal Sheet Metal



Item No. | LAN-MRS-10
Description | Mini Rail 10° Support Rear Leg



Tilt Mounting



Tripod system is used for metal roof concrete roof, you can adjust angles as 10-15deg, 15-30deg and 30-60deg options to maximize energy production. All Products pre-assembled before shipment, to make the installation easy and quick for saving your labor cost and time. Customized angle allowed according to customers' need to meet special installation requirements.

Technical features:

Product name	Tripod mounting system
Application	Flat concrete roof, metal roof, open terrain
Inclination	Customized
Material	AL 6005-T5, SUS 304
Finish	AL 6005-T5 Anodized
Module orientation	Landscape or Portrait



1 Assembly

Item No. | LAN-FTP
Description | The Fixing Angle Tripod



Item No. | LAN-ATP
Description | The Adjustable Angle Tripod



Item No. | LAN-R52
Description | 52mm Rail



Item No. | LAN-EIC
Description | Universal Adjustable (30-40mm) Inner Clamp Kit (Include Spring & Earthing Clip)



Item No. | LAN-FEC
Description | General End Clamp Kit



Tripod systems have fixed angle and adjustable angle design for options.



1.Fixed Angle Tripod system(LAN-FTP-X): According to customers' need ,we customize different sizes and angles to make a fast, easy and lower cost installation, this is Suitable for installation at known building angle.



2.Adjustable Angel Tripod (LAN-ATP-X): According to the site need to adjust the tripod angle for installation demand. It is suitable for multi-angle installation projects.

2 Assembly

Beam



U Base



32-32 AL Tube



3 Assembly

Beam



U Base



32-32 AL Tube



27-27 AL Tube



Ballasted-PRO Mounting



10 or 15 Degree dual tilt

- Maximal area utilized
- Maximal PV quantity installed
- E-W 10 or 15 is for solar installed on a flat roof, for maximized roof space utilized, and PV quantity installed.
- All parts are made of extruded aluminum, with stainless steel 304 fasteners
- EPDM foam tape is installed at the bottom of the system, separated the roof and system.
- EPDM foam tape provides better friction, and compensates for the height difference when the roof is uneven.

Technical features:

Product name	E-W 10 or 15
Application	Flat roof
Tilt	10° or 15°
System Material	extruded aluminum profile 6005 T5
Fastener material	Stainelss steel 304
Finish	Anodized
Module orientation	Landscape



1 Assembly

LAN-AIC



LAN-FEC



LAN-BPF-10



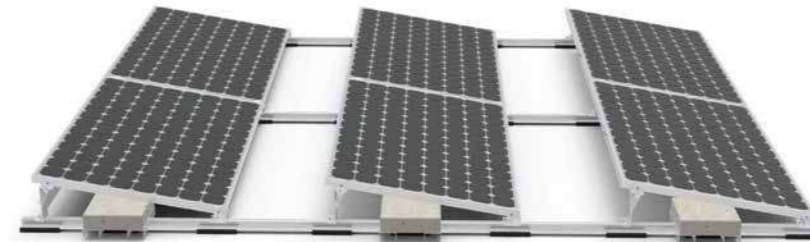
LAN-BPR-10



LAN-BPF15



LAN-BPR15

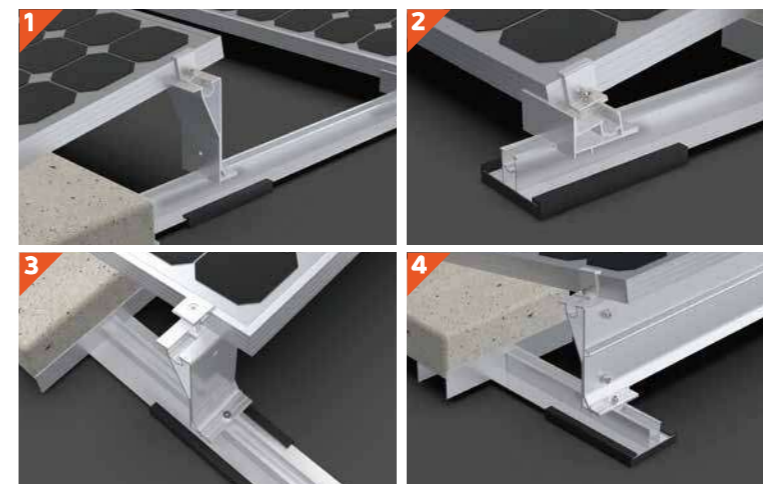


10 or 15 Degree tilt

- Better panel output
- The S Ballast is for solar PV to be fast and easily installed on a flat roof with 10 or 15 tilt degree inclination. All parts are made of extruded aluminum, with stainless steel 304 fasteners
- EPDM foam tape is installed at the bottom of the system, separated the roof and system.
- EPDM foam tape provides better friction and compensates for the height difference when the roof is uneven.

Technical features:

Product name	S 10 or 15
Application	Flat roof
Tilt	10° or 15°
System Material	extruded aluminum profile 6005 T5
Fastener material	Stainelss steel 304
Finish	Anodized
Module orientation	Landscape



2 Assembly

LAN-R41-02



LAN-BST-02



LAN-SFR-04



LAN-EFT-03

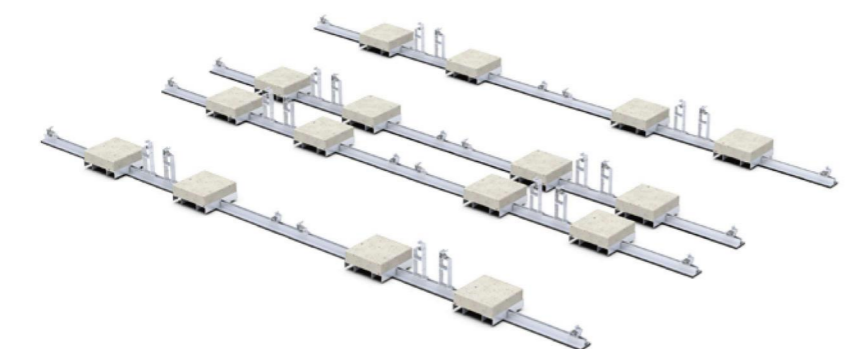


Ballasted-ULT Mounting



East & West Ballasted-ULT Systems suitable for concrete flat roof and trapezoidal sheet metal roof. Unlike the traditional solar panel fixing method, whose fixing point at the end of the long side of the panel, this series help solar panels to be fixed anywhere on the long side. Therefore, solar panels could withstand greater wind and snow pressure. There is no need to use expansion bolts or chemical bolts on the roof, no damage to roof. The system connects all the panels with the rails into a whole. East-west facing panels have a great effect on resisting wind loads. A combination of high quality aluminium components make a robust, reliable system and quick and easy installation.

Technical features:	
Product name	Ballasted-ULT Series
Application	Concrete flat roof and trapezoidal sheet metal roof
Tilt	10° or 15°
System Material	Extruded aluminum profile 6005 T5, EPDM
Fastener material	Stainless steel 304
Finish	Anodized
Module orientation	Landscape

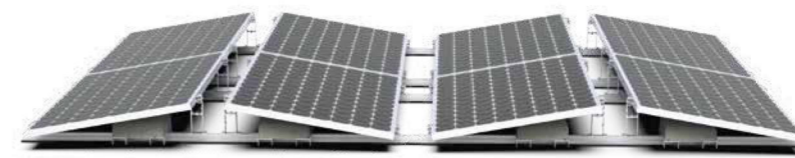


1 Assembly

- LAN-BUF-10
- LAN-BUR-10
- LAN-R41-02
- LAN-BST-02
- LAN-SFR-04
- LAN-EFT-03

Product Feature:

Solar panels could withstand greater wind and snow pressure.
 Maximal area utilized.
 Maximal PV quantity installed.
 Maximized roof space utilized, and PV quantity installed.
 Better panel output.
 Solar PV to be fast and easily installed on a flat roof with 10° tilt degree inclination.
 All parts are made of extruded aluminum, with stainless steel 304 fasteners.
 EPDM foam tape is installed at the bottom of the system, separated the roof and system.
 EPDM foam tape provides better friction and compensates for the height difference when the roof is uneven.



East & West 10° for concrete flat roof



South or North 10° for concrete flat roof



South or North 10° for trapezoidal sheet metal roof

2 Assembly

- LAN-BUF-15
- LAN-BUR-15
-
-

Ground Mounting



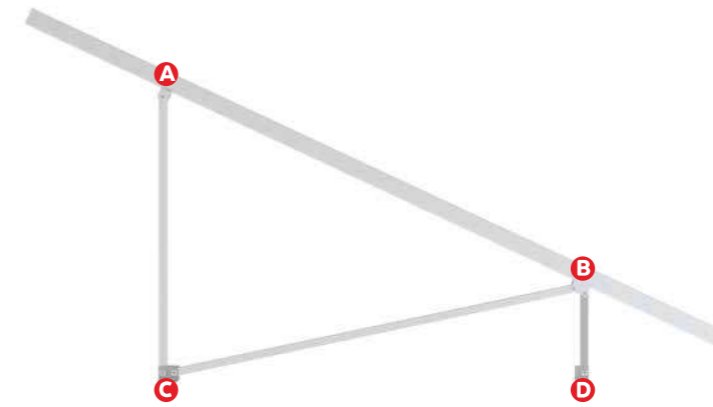
Standard Ground Mounting System

Aluminum ground mount, optimized for lightweight, quick and efficient installation with flexible on engineering upon site conditions. Optional on foundation by ground screw or concrete. Maximize pre-assembled before shipment

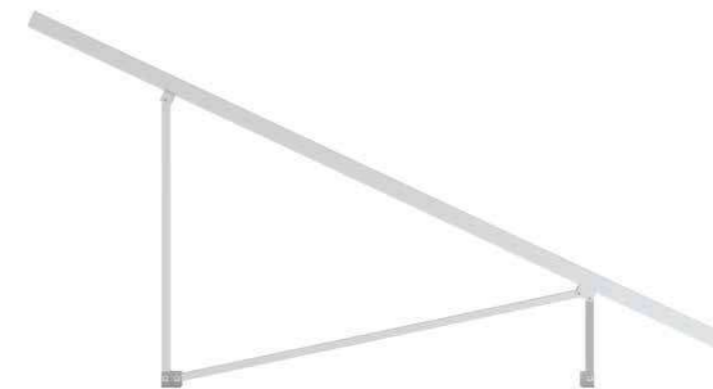
Technical features:

Product name	Standard ground mounting system
Application	Flat concrete roof, open terrain
Inclination	Customized
Material	AL 6005-T5, SUS 304, Q235
Finish	AL 6005-T5 Anodized, Q235 Hot-dip galvanizing
Module orientation	Landscape or Portrait

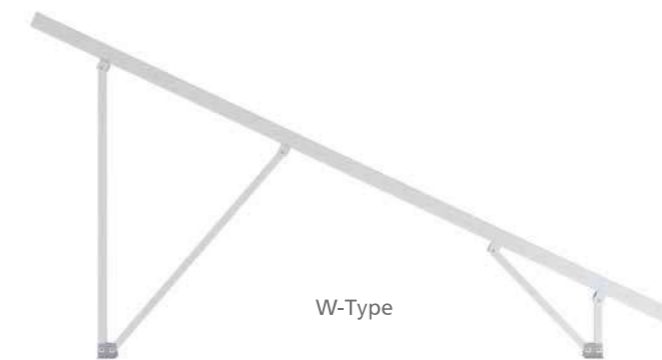
1 Assembly



Ground mounting system has been maximized pre-assembly before shipment, which make the installation more convenient.



N-Type



W-Type

2 Pre-Assembly



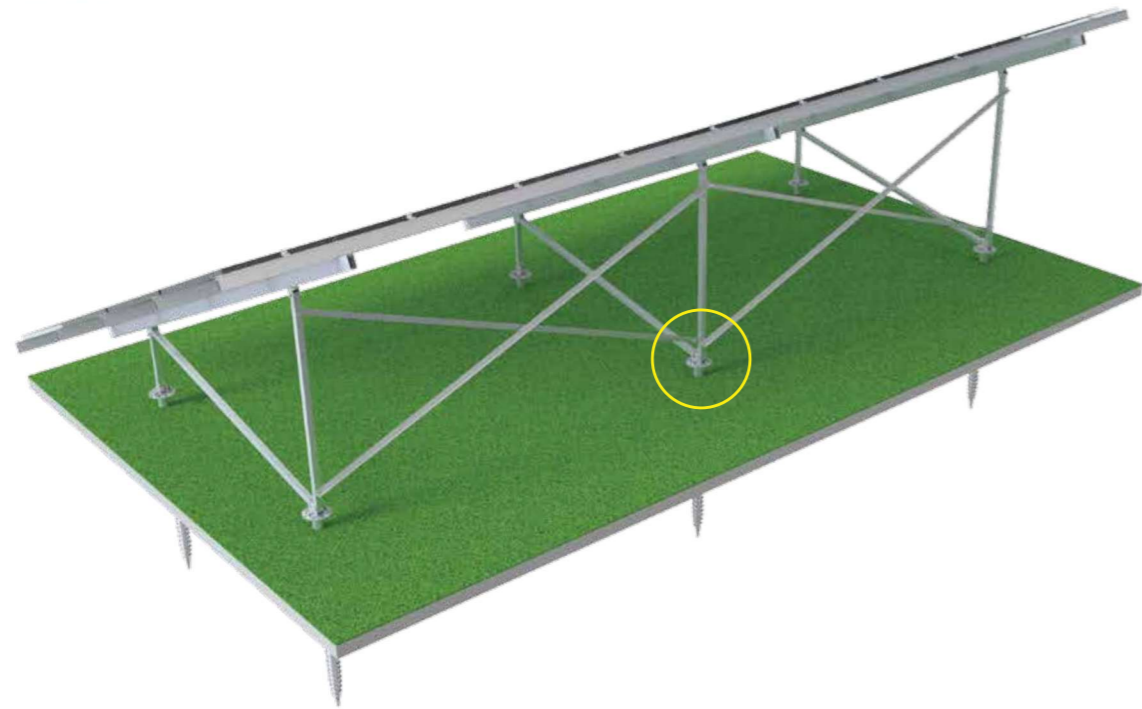
Depending on the different design conditions, pre-assembly support is generally designed into the following two shapes:

The N-Type pre-assembly support is mainly used for the small wind & snow load condition projects.(2-4 columns)

The W-type pre-assembly support is mainly for the 4-5 columns wind & snow load condition projects. We will add cross support to make the structure stronger if the ground height is higher or wind & snow load is larger.

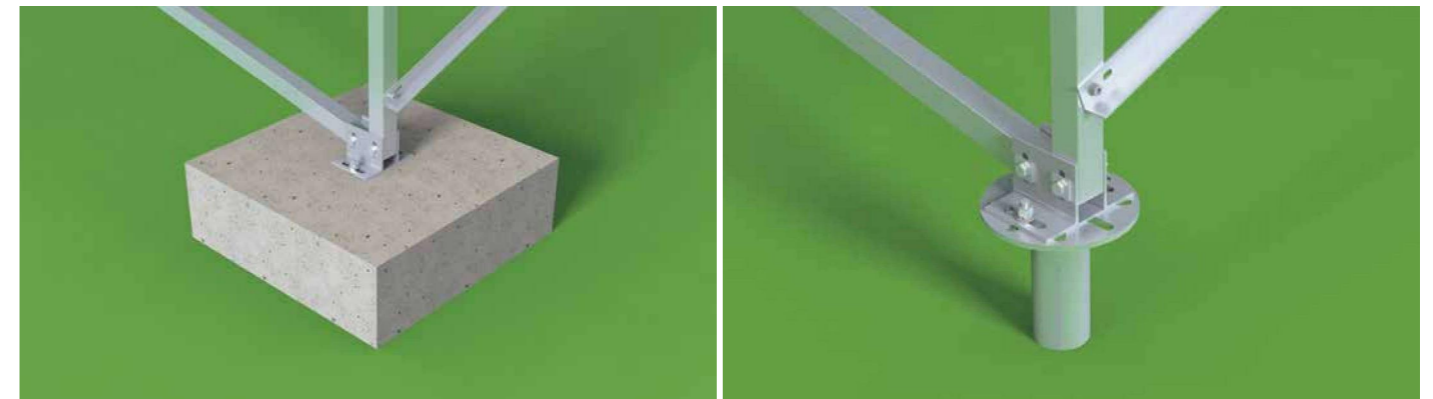
Ground Mounting

3 Cross



4 Foundation

Ground mounting system are commonly used for Concrete Foundation and Screw Foundation.



Concrete Foundation

Screw Foundation

Item	Concrete Foundation	Screw Foundation
Applicable terrain	Flat, Even Tilt, Ladder	
Applicable geology (reference)	Random	SWS3 ≤ N ≤ 10 SWS Test, cohesive soil 3 ≤ N ≤ 10
Difficulty Level	Complicated	Easy
Cost	Higher	Lower
Adjustment range	Not convenient to adjust the height of base	Larger
Corrosion resistance	Anti-Corrosion	Hot-dip galvanizing on the surface of the screw foundation, which has met the anti-corrosion requirements of the service life

Conventional pile compression and tensile strength reference values(KN)								
Ground Screw Length	N=3		N=5		N=7		N=10	
	Resistance	compression Resistance	Resistance	compression Resistance	Resistance	compression Resistance	Resistance	compression Resistance
1600	8.7	9.1	14.6	15.2	20.4	21.4	29.2	30.6
1800	9.9	10.2	16.5	17.1	23.1	24	33	34.4
2000	11	11.4	18.4	19	25.8	26.7	36.8	38.2
2200	12.2	12.5	20.3	21	28.4	29.4	40.6	42
2500	13.9	14.2	23.2	23.8	32.4	33.4	46.4	47.8

Remarks: The N value of the soil in this table are based on the Swedish penetration test (SWS).

Ground Mounting



U Pile Ground Mounting System

U Pile Ground Mounting Systems suitable for large scale power station installation, Pile to the ground makes installation faster and lower cost than others. Each components are Maximize pre-assembled, widely save your labor cost and installation time. Customization allowed according to project wind & snow load, provide economic & effective solutions.



1 Assembly



The U type Pile Ground Mounting System has been folded into a rectangular shape before shipment. Easy to transport.

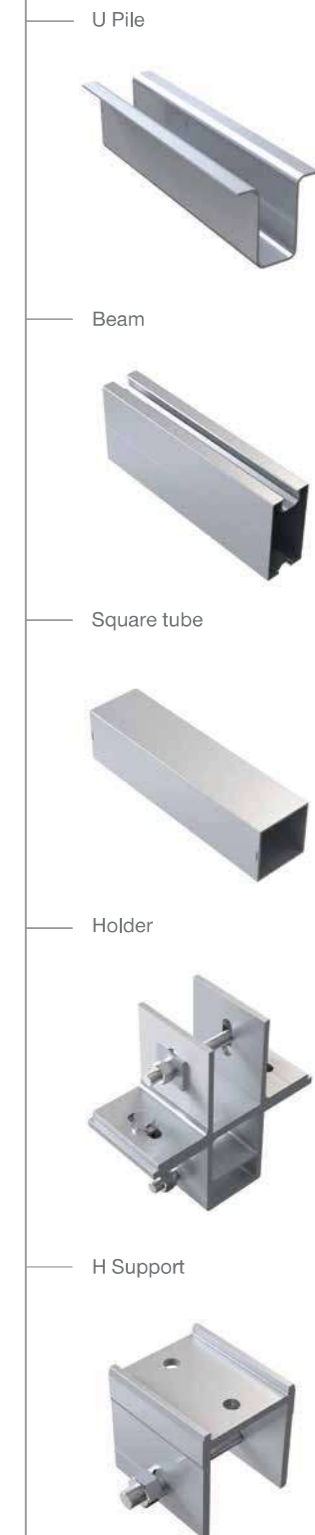
Technical features:

Product name	U Pile ground mounting system
Application	Open terrain
Inclination	Customized
Material	AL 6005-T5, SUS 304, Q235
Finish	AL 6005-T5 Anodized, Q235 Hot-dip galvanizing
Module orientation	Landscape or Portrait

Penetration depth	Conventional U pile compression and tensile strength reference values (KN)							
	N=3		N=5		N=7		N=10	
	Resistance	Compression Resistance	Resistance	Compression Resistance	Resistance	Compression Resistance	Resistance	Compression Resistance
1500	9.5	11.5	15.7	19.3	21.9	27	31.13	38.6
1600	10.1	12.3	16.7	20.6	23.3	28.8	3.235	41.2
1700	10.8	13.1	17.8	21.8	24.8	30.6	.337.	43.7
1800	11.4	13.9	18.8	23.1	26.2	32.4	341.4	46.3
2000	12.6	15.4	20.8	25.7	29.1	36	45.65	51.5
2200	13.8	17	22.9	28.3	32	39.6	1.7	56.6
2500	15.7	19.3	26	32.1	36.3	45		64.3

Remarks: The N value of the soil in this table are based on the Swedish penetration test (SWS).

2 Main structure & components



Carport Mounting

1 Structure & components



Carport Mounting System

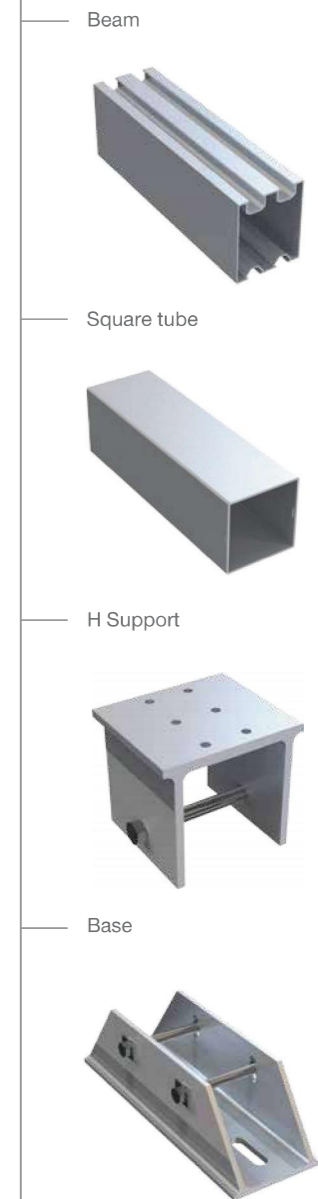
Carport Mounting Systems offers a simplified and economical solutions that provides a perfect combination of Shade parking and solar power generation as well as electric vehicle charging. It applied for family parking, commercial parking, awnings and even bus stops.



highly pre-assembled main structure for solar modules landscape or portrait 5°/8°/10°inclination or custom customized and engineered to project maximal span up to 5.4m cover up to 2 parking spaces per span.

Technical features:	
Product name	Carport mounting system
Application	Solar parking structure
Inclination	5°, 8°, 10° or customized
Material	AL 6005-T5, SUS 304
Finish	AL 6005-T5 Anodized
Module orientation	Landscape

2 Main structure & components



Waterproof Carport System



Our carport systems are sold to Africa, the Middle East, Southeast Asia, Europe and the South America. The idle area of the parking shed is used to build a photovoltaic parking shed, and the combination of photovoltaic power generation and carport is the simplest one in the combination of photovoltaic and building. It can not only achieve all the functions of the traditional carport, but also bring electricity generation benefits to the owner. It is stored in the battery by the charging device or directly supplied to the electric vehicle to charge for self-use. You can even use extra power to get online. Using aluminum alloy structure bracket, simple installation, generous, fashionable, elegant.

Product Overview:

Install Site	Flat outdoor
Material	AL6005-T5, SUS304
Standards	AS/NZ1170.2、JIS C 8955、MCS 012、TUV、UL2703 etc
Tilt Angle	5°, 30°

1 Assembly



Features:

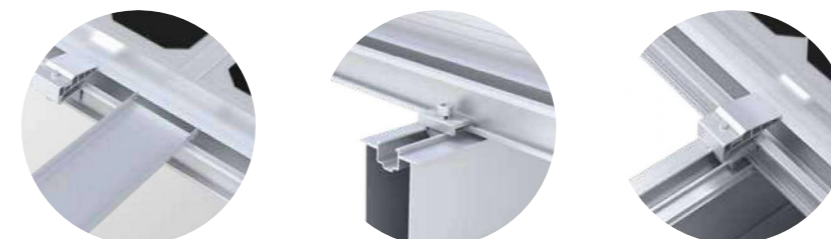
1. Good heat absorption.
2. Good waterproof and rain protection, convenient installation, and flexibility.
3. Make full use of the original site to provide green energy.
4. Suitable for frame panel: Poly modules, double glass module etc.

Installation place: home, company, shopping mall, large parking lot.

Parking category: battery car/bicycle, car, bus.

Number of parking Spaces: 1 parking space, 2 parking Spaces, 3 parking Spaces, multiple parking Spaces (large span).

By row: single row parking space, double row parking space.



2 Component List

